

Arham  
VARDHAM  
BUILDING TRADITIONS OF TOMORROW



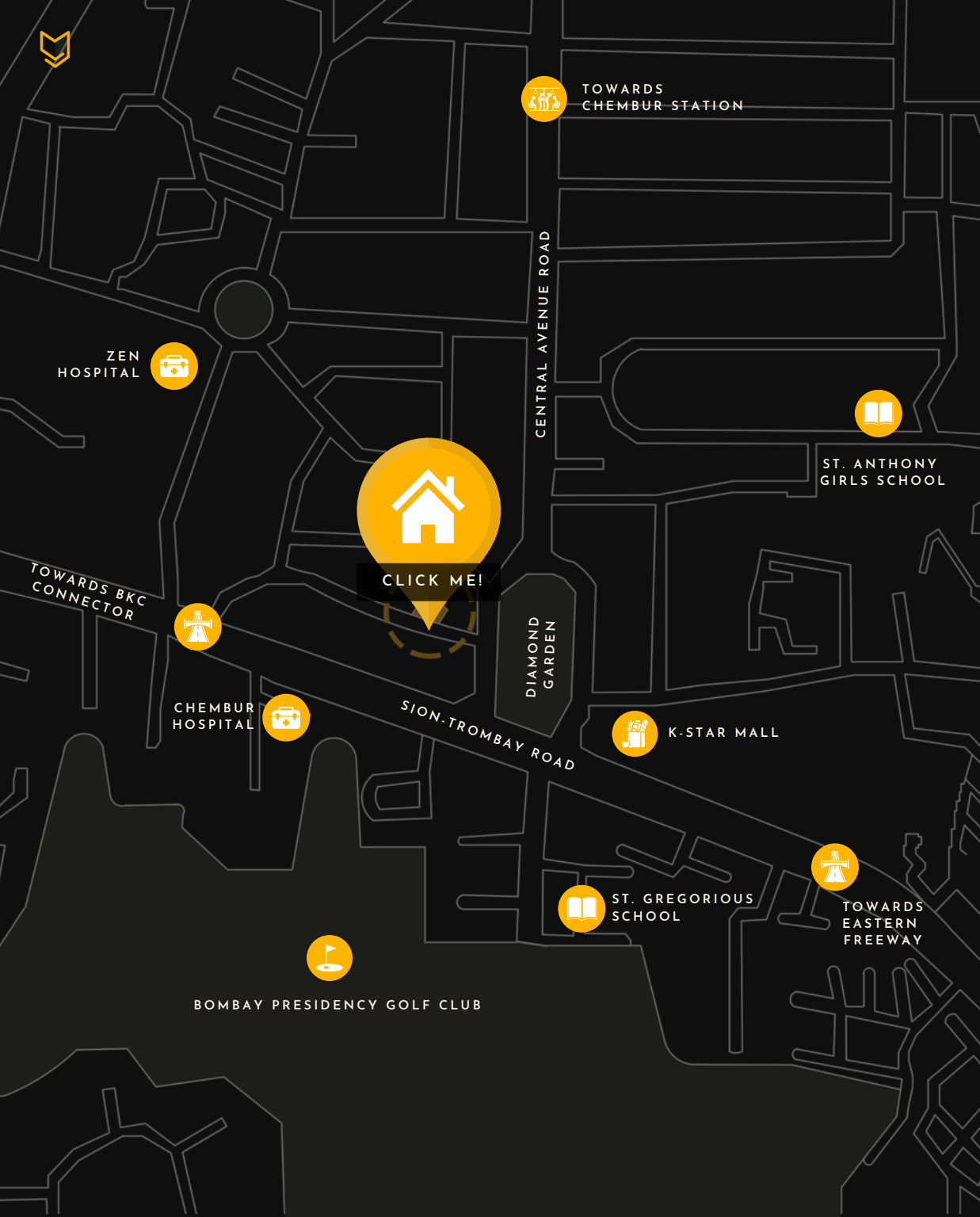
# Arham VARDHAM

## BUILDING TRADITIONS OF TOMORROW

A beautiful amalgamation of luxury lifestyle and traditional values, Vardham, is where your journey begins. Nestled in the serene suburb of Chembur, it provides the much-needed escape from the hustle of the city, while ensuring seamless connectivity and comfort. A residential landmark with exquisite interiors, assured privacy and modern amenities, Vardham features spacious, elegant, and well-planned residences where Indian traditions meld with urban living.

Image shown for representation purposes only.

VARDHAM



# CHEMBUR

Located in one of Mumbai's finest neighbourhoods, Arham Vardham is situated at the junction of Chembur's Diamond garden. Surrounded by a vast stretch of open spaces and fresh air, as well as commercial developments, Arham Vardham has set the new standard for luxury living, a place to live, work and play.

Click [here](#) for the location.

## WITHIN 2 MINUTES\*

- D-Mart and K-Star mall
- Diamond garden
- Upcoming metro station

## WITHIN 5 MINUTES

- Zen Hospital
- St. Gregorious school
- Bombay Presidency Golf Club
- Eastern Freeway
- Chembur Gymkhana

## WITHIN 20 MINUTES

- International airport
- BKC

\*Timings as per google maps.





\*Image shown for representation purposes only

## AN EXTRAVAGANT ENTRANCE

The Arham Vardham lobby redefines arrival, creating a grand distinction between your home and the rest of the city.





\*Images shown for representation purposes only



## AN UNPARALLELED LIFESTYLE

With a carefully planned kids play area, walking track for seniors, the Diamond garden for gatherings and an exclusive rooftop for residents, Arham Vardham caters to your every desire and demand.





\*Image shown for representation purposes only



## AN EXQUISITE RESIDENCE

The Arham Vardham lobby redefines arrival, creating a grand distinction between your home and the rest of the city.





\*Images shown for representation purposes only



## A SAFE FUTURE

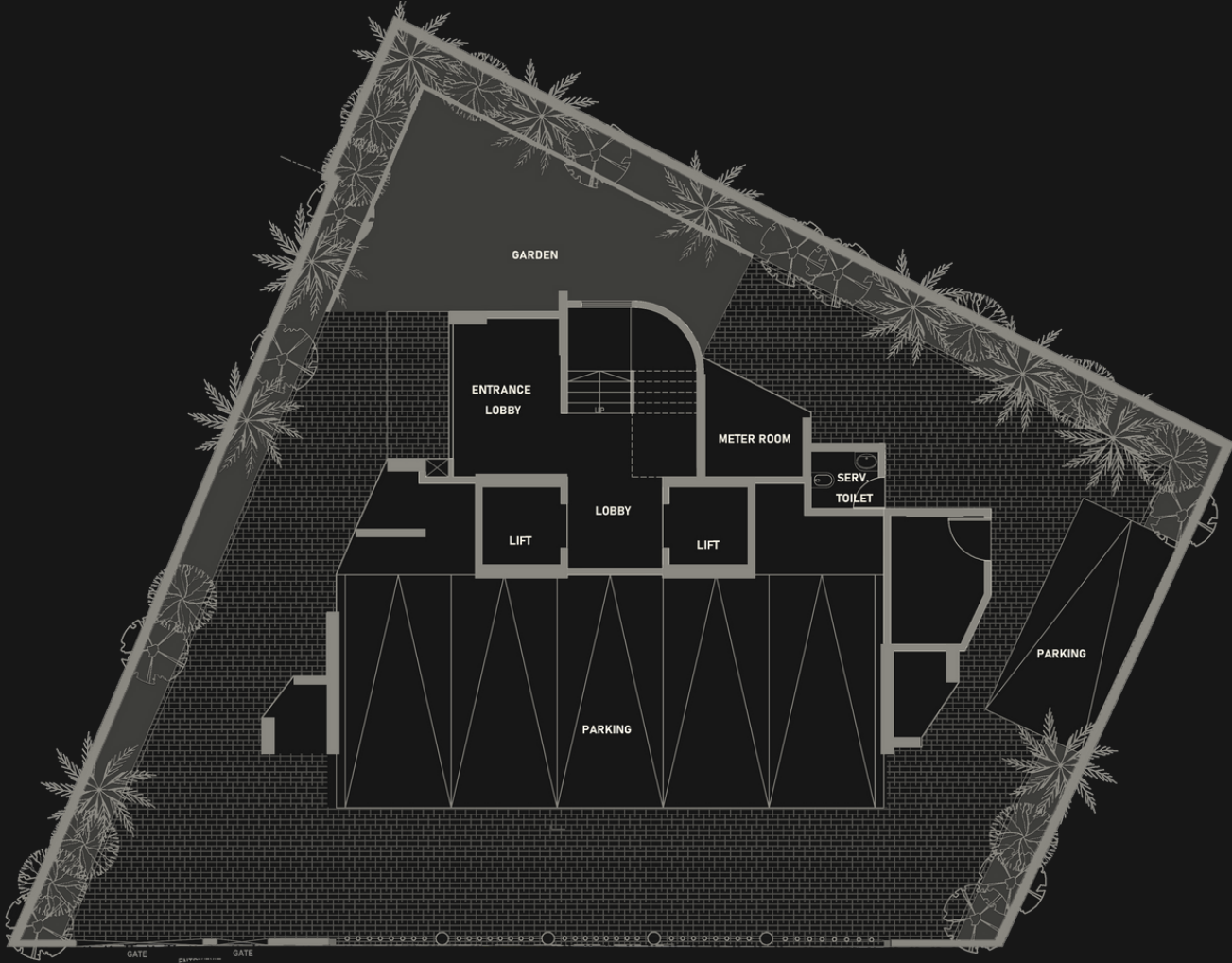
With state of the art rainwater harvesting systems, electric vehicle charging stations, all-round security, cameras, fire sensors and equipment, we ensure that you and your loved ones are safe and ready for the future.







GROUND FLOOR  
PLAN



\*Image shown for representation purposes only



ARHAM CLASSIC  
2 BHK  
652 SQ.FT.



\*Image shown for representation purposes only





**ARHAM PREMIERE**  
**2 BHK**  
**677 SQ.FT.**



\*Image shown for representation purposes only





ARHAM GRANDE  
4 BHK  
1334 SQ.FT.



\*Image shown for representation purposes only



\*Image shown for representation purposes only

# THOUGHTFULLY DESIGNED

Crafted for you by this phenomenal team of partners, the Arham Vardham residences measure up to the highest standards of quality & design.

## **SOLICITORS**

J.K Ashar & Co

## **ARCHITECTS**

B.H. Wadhwa & Chhadva Associates

## **LANDSCAPING ARCHITECTS**

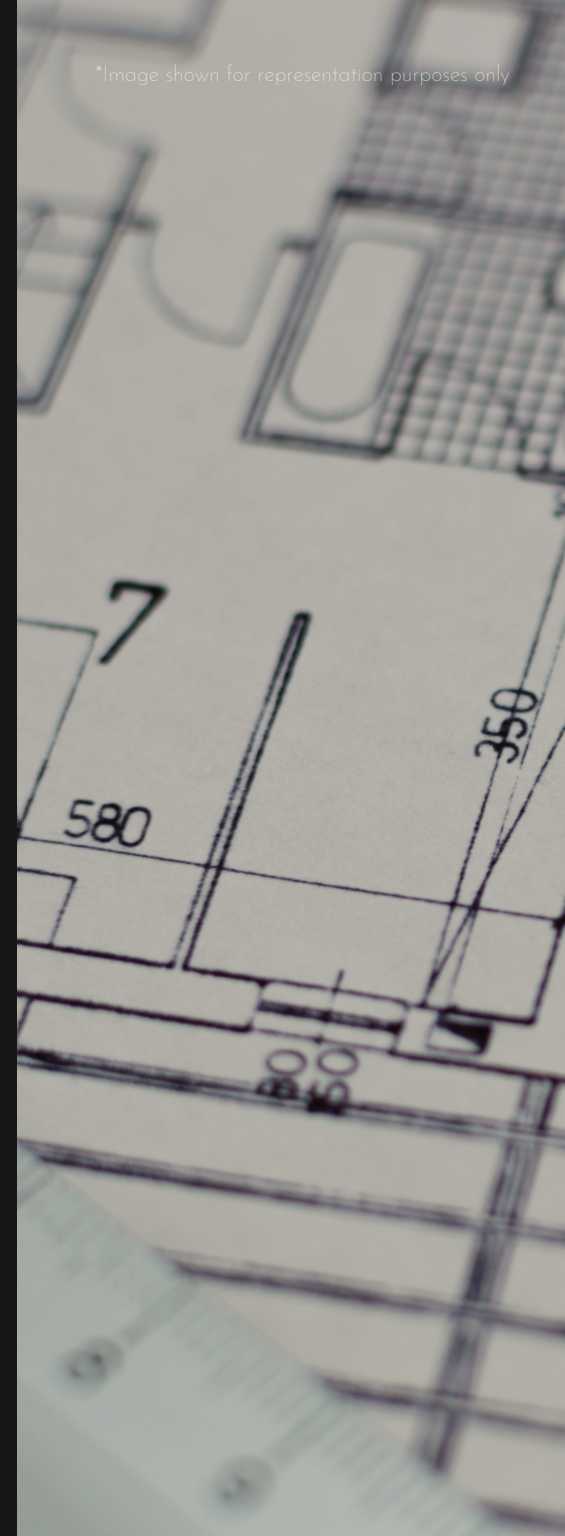
Metadesign Architects Pvt. Ltd.

## **DESIGNING ARCHITECTS**

Apices Studio Pvt. Ltd.

## **RCC CONSULTANTS**

Associated Structural Consultants LLP





# ABOUT US

At Mahavir Group, we have always believed that trust, superior quality and customer satisfaction are our measures of success.

With over 20 years of experience in the real estate industry, we have successfully ensured that our expertise drives all decision making. From carefully following our mandates to finding the perfect project partners, we eliminate any unnecessary mistakes.

We promise to deliver excellence in the form of houses and are very proud to witness them transform into meaningful homes. Our track record is our biggest testimonial and our happy clientele is our biggest reward.

We believe that our integrity is our biggest virtue. With this we always ensure that the development of our projects are closely monitored and all required compliances are duly obtained.

“

*Trust, superior quality, and customer satisfaction are our measures of success.*

”





# OUR PHILOSOPHY

## PERSEVERANCE

We strongly believe that with perseverance, all things are attainable. With this belief, we walk an extra mile to ensure all the mandates, permissions, authorizations and compliances are received before handing over possession to our customers. We don't stop there, we're in the business of building relationships and promise to stand by our customers, always.

## COMMITMENT

Trust and reassurance are the strongest pillars of the real estate industry in India. For us, our sustained commitment to quality, to integrity and to our partners, customers and employees has helped us build our empire and achieve our goals. We owe our legacy to the people that trusted us and to the commitments we kept.

## INNOVATION

As a multi-generational business, we have learnt the best way to progress is through innovation. We actively choose to learn from our previous projects and mistakes to ensure we find better, more sustainable ways to solve existing problems in the industry. For instance, whenever we've done things differently and given customers more than they expected, it truly enhanced their experience, reduced future problems and positively impacted loyalty.



# OUR PROJECTS

## MATUNGA

 Arham Aum

## CHEMBUR

 Arham Brindavan

 Arham Palms

 Arham Tulsivihar

 Arham Pitru Chhaya

## BHANDUP

 Arham Marigold



Arham Brindavan



Arham Aum

\*Click on the  for each location.



# MAHAVIR GROUP

## CONTACT US

+91 22-25202890 / +91 22-25211098 / +91 89283 75579

[info@mahavirgroup.com](mailto:info@mahavirgroup.com)

<http://www.mahavirgroup.com/>

1&2, Bldg No. 4, Ground Floor, 2nd Rd, Kandhari Colony, Chembur, Mumbai,, Maharashtra - 400071.

Note: The Developer reserves the right to change plans, specifications & features without prior notice or obligation, at their sole discretion and subjective to the approval of government authorities. All specifications, writeups, internal layouts, renderings, floor plans, maps & pictures shown in this booklet are only indicative and are the artist's conceptions, not actual depictions of the building, its walls, roadways or landscaping.