



Arham
BRINDAVAN

- A PROJECT BY -



M A H A V I R
GROUP



SENSE OF WELL BEING

Only good life meets you here. Cocooned from the city rush, this luxury haven is fully equipped to pamper and de-stress you.

A collection of exceptional amenities complemented by recreational activities and futuristic gadgets.

The best of times await you, within and just steps from your door.



WELL CONNECTED

All roads lead to Chembur, the throbbing suburb of Mumbai, where you can work, relax, shop and socialise only moments from your home.

The lush green surroundings make reclining in your elevated oasis an absolute joy. Be it classy restaurants, top-notch banks or an open-air supermarket, all are easily accessible at an arm's length.



YOU ARE IN
A DIFFERENT LEAGUE.
SO ARE YOUR
NECESSITIES &
DEMANDS.

AESTHETICALLY AND AUTHENTICALLY DESIGNED 3 BHKS



- 24/7 CCTV SURVEILLANCE
- DESIGNER ENTRANCE LOBBY
- GARDEN AREA

LUXURY THAT TELLS YOU THERE IS MUCH MORE TO LIFE THAN JUST LIVING.

Only good life meets you here. Cocooned from the city rush, this luxury haven is fully equipped to pamper and de-stress you. A collection of exceptional amenities complemented by recreational activities and futuristic gadgets. The best of times await you, within and just steps from your door.

AMENITIES

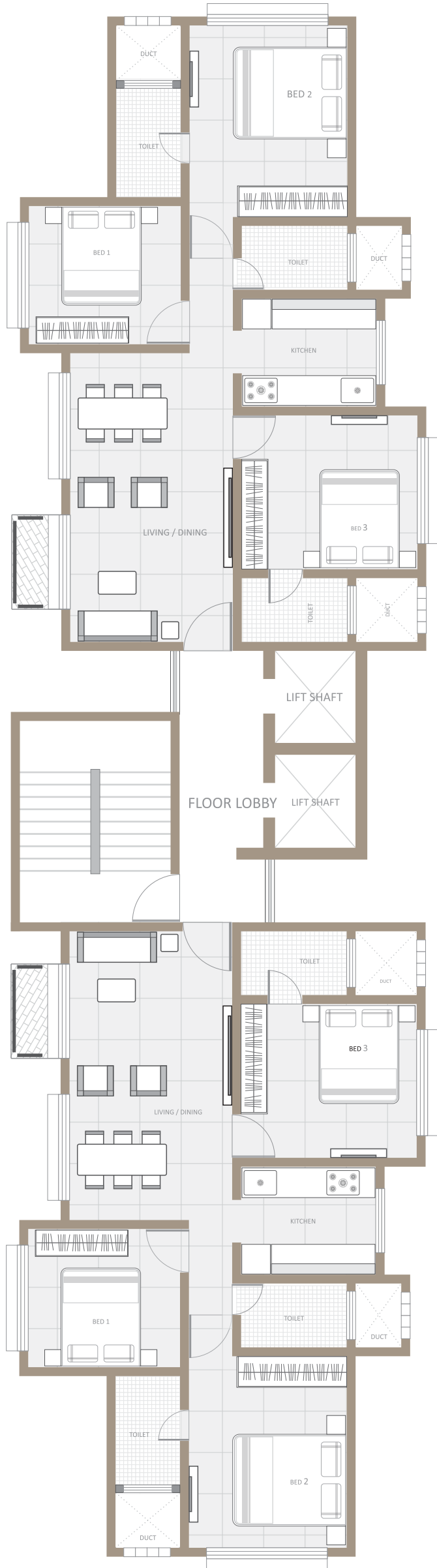
- Vitrified Tile Flooring.
- Powder coated heavy section sliding window
- Teakwood / Laminate Finished Main Door
- Granite kitchen platform with S.S Sink.
- Tiles above the kitchen platform upto the beam bottom level.
- Provision for cable TV, Internet & Telephone points.
- Concealed Copper Wiring with high quality Modular switches.
- Designer Bathrooms with concealed plumbing & ultra modern
- Bathroom of Jaquar or equivalent fittings make & other sanitary ware of reputed brands.

- LIVING / DINING AREA - 20'9" x 12'
- BALCONY - 8' x 3'9"
- BEDROOM 1 - 10'6" x 11'
- BEDROOM 2 - 14'3" x 11'9"
- TOILET 2 - 8'X5'

- COMMON TOILET - 5' x 8'
- KITCHEN - 8' x 9'9"
- BEDROOM 3 - 11' x 13'
- TOILET 2 - 5'X8'

RERA CARPET AREA - 969.00 SQ. FT.

ROAD



SUNSHINE CITY CHEMBUR

Here's an address luxuriously positioned right in the epicentre of a Chembur. Arham Brindavan is a coveted destination for those seeking proximity to a refined life.



- 5 mins from SCLR
- 5 mins from Eastern Express Highway
- 5 mins from Eastern Freeway
- 5 mins from Monorail Station
- 5 mins from Govandi Station
- 5 mins walk from Chembur Station

- Site Address -
Brindavan CHS, Plot No.92,
3rd Road, Nr. Chembur Station,
Mumbai - 400 071

Contact No. - 2527-3838 | 2528-8383

www.mahavirgroup.com

- DEVELOPERS -



M A H A V I R
GROUP

MAHA RERA REG. NO - P51800004177

Note: The Developers reserve the right to change plans, specifications and features without prior notice or obligation, at their sole discretion and subject to approval of Government authorities. Specifications, eriteup, internal layouts, plans and pictures shown in this booklet. All renderings, floorplans, pictures shown in the booklet are only indicative. All renderings, floor plans and maps are the artist's conceptions and not actual depiction of the building its walls, roadways or landscaping.